

GB20PR

PRODUCT CLASS

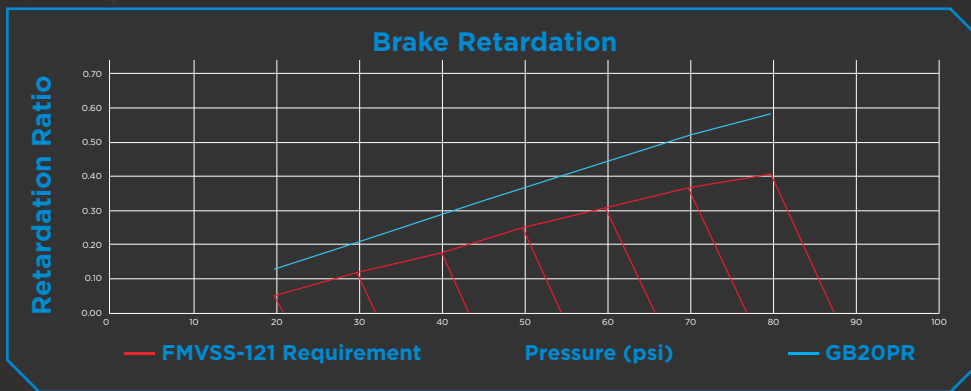
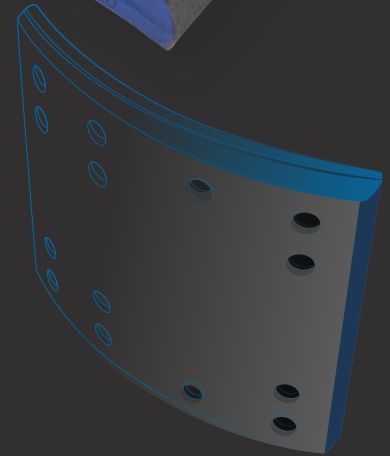
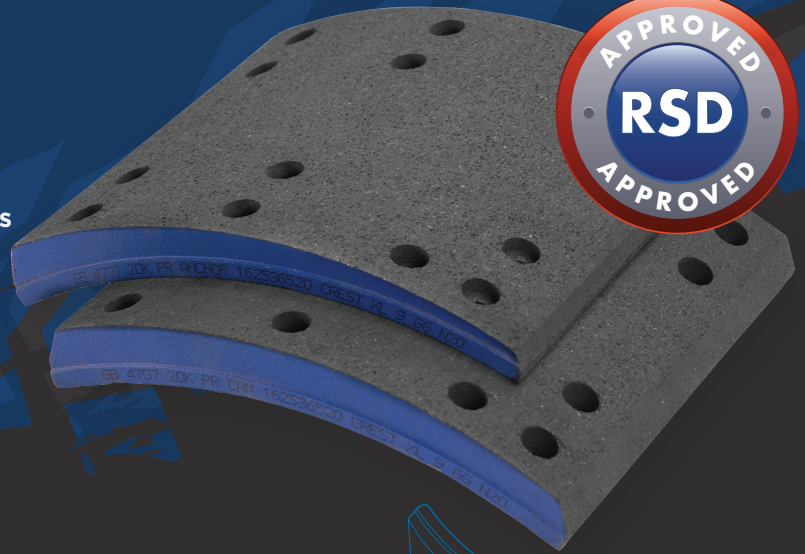
20K PREMIUM

AXLE RATING

UP TO 20,000 LBS

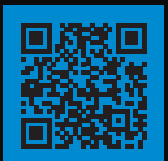
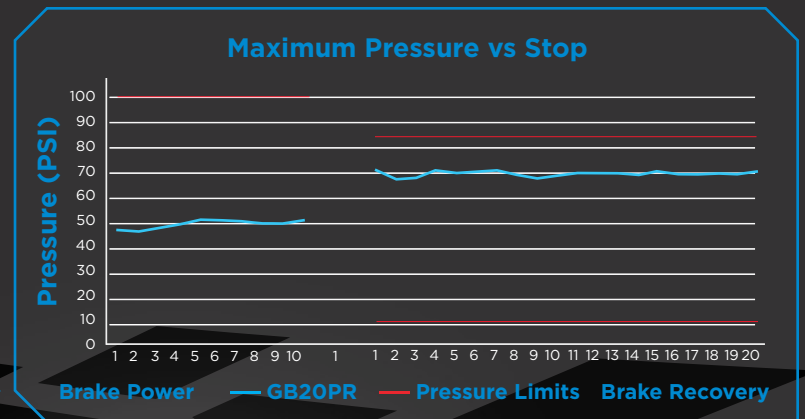
Truck • Tractor • Trailer • Multi-Duty • Line Haul

- Exceptional fade and recovery characteristics
- Copper free N rated formulation
- Long life and drum friendly
- Rated for RSD applications



TEST PARAMETERS

BRAKE	16.5" X 7"
SLACK ADJUSTER	5.5"
SLR	19.6"
CHAMBER	T30



Scan Here
with smart phone
to visit website
MAT-HD.com

Contact

Website: MAT-HD.com
Phone: 877.203.9495
Email: CS.MATHD@matholdingsinc.com



GORILLA
BY **MAT HD**

GB23PR

PRODUCT CLASS

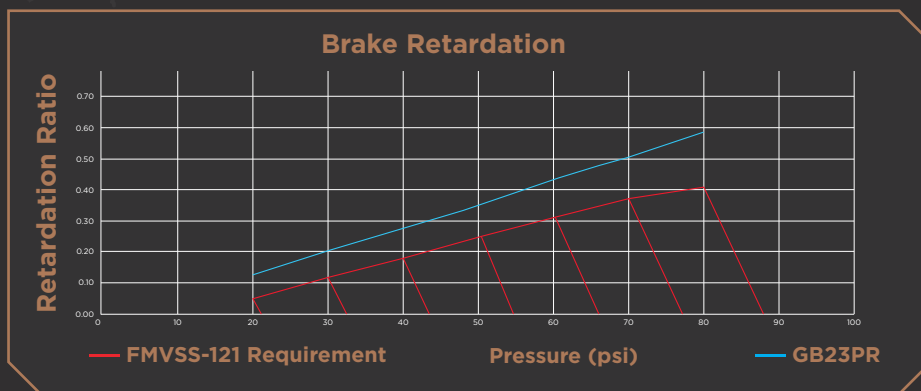
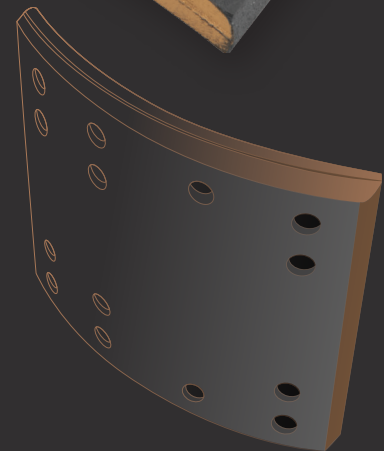
23K PREMIUM

AXLE RATING

UP TO 23,000 LBS

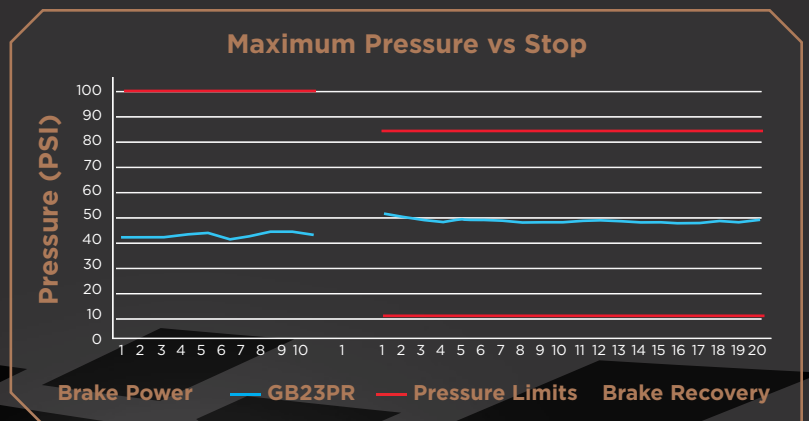
Truck • Tractor • Trailer • Multi-Duty • Line Haul

- Exceptional fade and recovery characteristics
- Copper free N rated formulation
- Long life and drum friendly
- Rated for RSD applications



TEST PARAMETERS

BRAKE	16.5" X 7"
SLACK ADJUSTER	5.5"
SLR	19.6"
CHAMBER	T30



Scan Here
with smart phone
to visit website
MAT-HD.com

Contact

Website: MAT-HD.com
Phone: 877.203.9495
Email: CS.MATHD@matholdingsinc.com



GORILLA
BY **MAT HD**